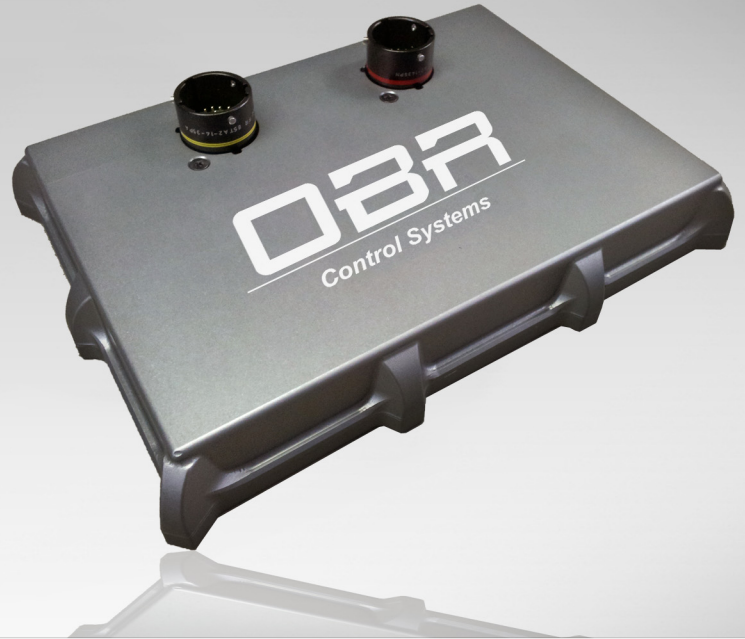


DIRECT INJECTION MODULE

EFR14

POWERFUL EFFICIENCY



The EFR14 injector driver has been designed to control Gasoline/Diesel injectors in direct injected engine applications.

The module is powered by an 80MHz PowerPC processor allowing high accuracy control of processing tasks. The EFR14 features programmable injector output drive voltages for up to 12 high voltage / high fuel pressure injectors and up to two high fuel pressure control valves.

The high performance DI driver module is packaged in a CNC machined sealed enclosure, which is lightweight, durable and compact.



Communication with the EFR14 is carried out over one of two CAN Bus.

EFR14 driver modules can be interfaced for use on engines with 5+ cylinders.

General specifications

- 80MHz PowerPC processor
- 2 drivers for Hitachi and Bosch high pressure fuel pumps
- 12 direct injection high voltage drivers
- 6 Analogue pull-up/down inputs - hardware configurable
- Maximum engine speed for 12 cylinder direct injection engine exceeds 11,000 RPM
- Fully programmable injector voltage levels and current settings
- 2 CAN lines
- Temperature: -40 +105 °C
- Electrical: 6-15volts
- Size: 187 x 134 x 25.5 mm (height excl connector height)
- Fitted with 2 x size 18 military specification connectors

sales@obrcontrolsystems.com